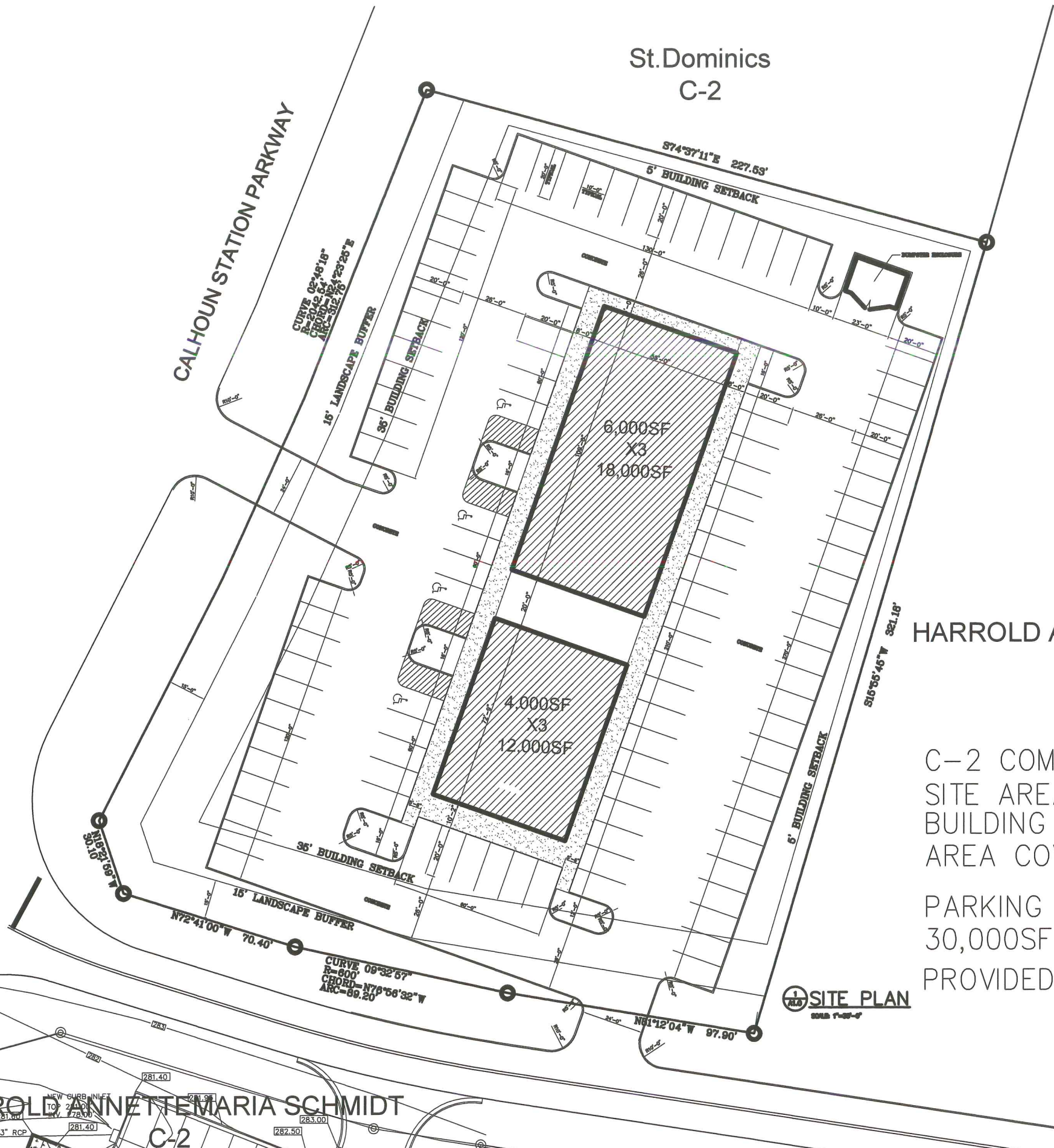


Amended

St. Dominics
C-2

CALHOUN STATION PARKWAY

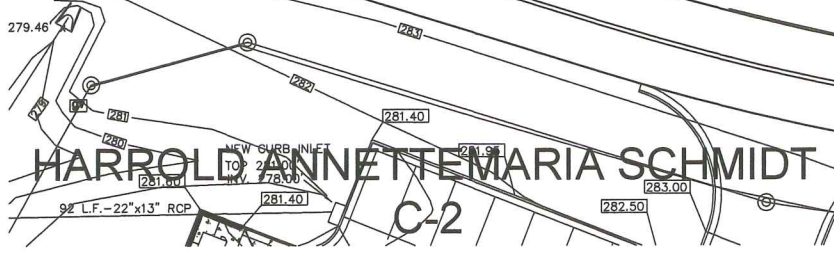


HARROLD ANNETEMARIA SCHMIDT
C-2

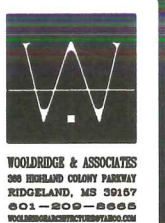
C-2 COMMERCIAL ZONING
SITE AREA 82,688SF
BUILDING AREA 10,000SF
AREA COVERAGE 12%

PARKING REQUIRED
30,000SF / 300 = 100 SPACES
PROVIDED SPACES = 105 SPACES

SITE PLAN



| REVISIONS | BY |
|-----------|----|
| | |
| | |
| | |
| | |
| | |
| | |
| | |
| | |
| | |
| | |



WOODRIDGE & ASSOCIATES
505 HIGHLAND COLONY PARKWAY
RIDGELAND, MS 39167
601-808-8888
WWW.WOODRIDGE-MS.COM

Germentown Office Complex
Calhoun Station Parkway
Gluckstadt, Mississippi



3/12/19
C1.0

MAYOR&BOARD.dwg

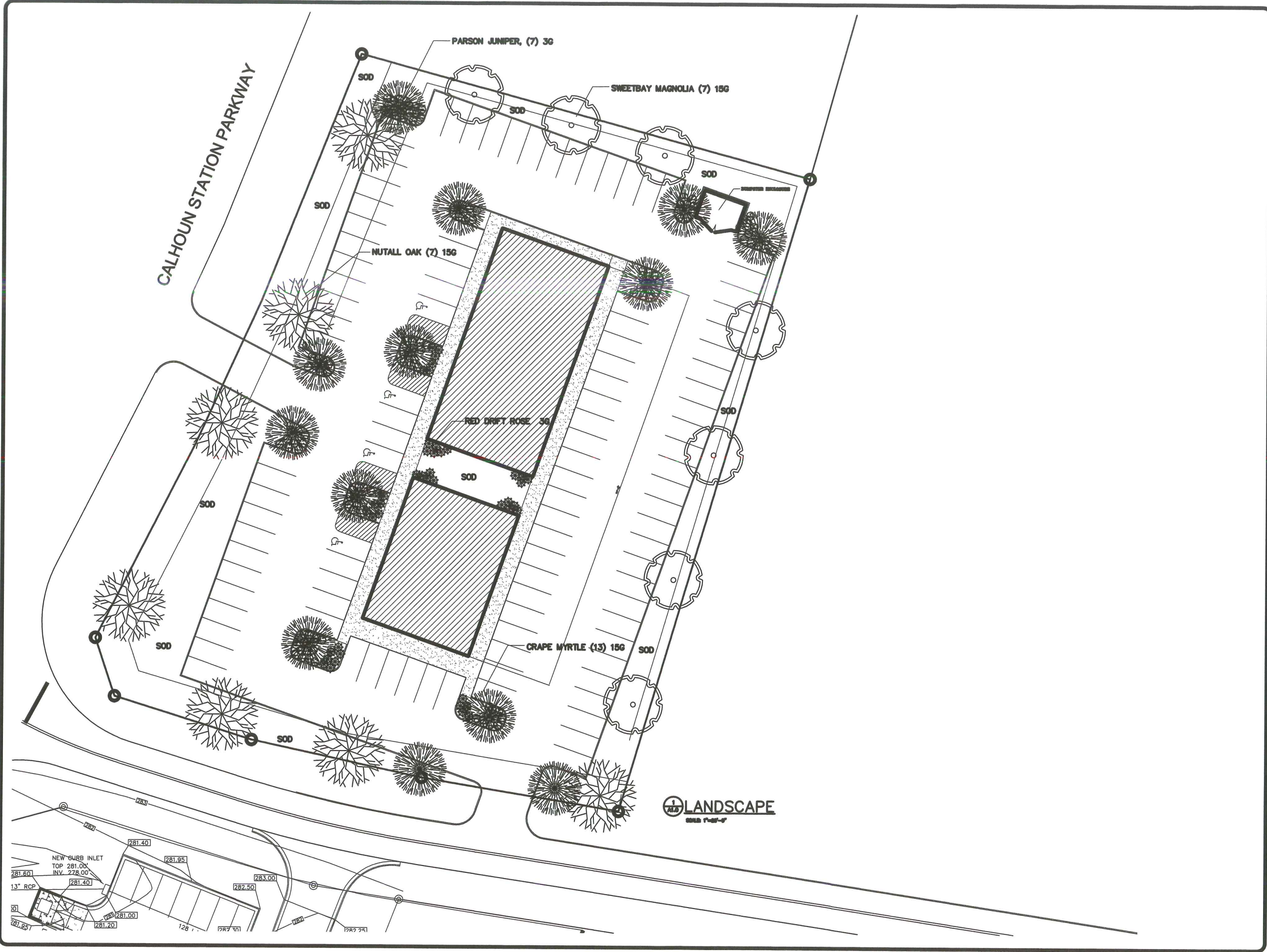
6/15/2001 9:21 AM

Woodridge & Associates

MAYOR&BOARD.dwg

6/15/2001 9:21 AM

Woodridge & Associates



| REVISIONS | BY |
|-----------|----|
| | |
| | |
| | |
| | |
| | |
| | |
| | |
| | |
| | |
| | |



WOODRIDGE & ASSOCIATES
 300 HIGHLAND COUNTY PARKWAY
 RIDGELAND, MS 39167
 601-808-8888
 WWW.WOODRIDGE-ASSOCIATES.COM

Germantown Office Complex
 Calhoun Station Parkway
 Gluckstadt, Mississippi



3/12/19

L1.0

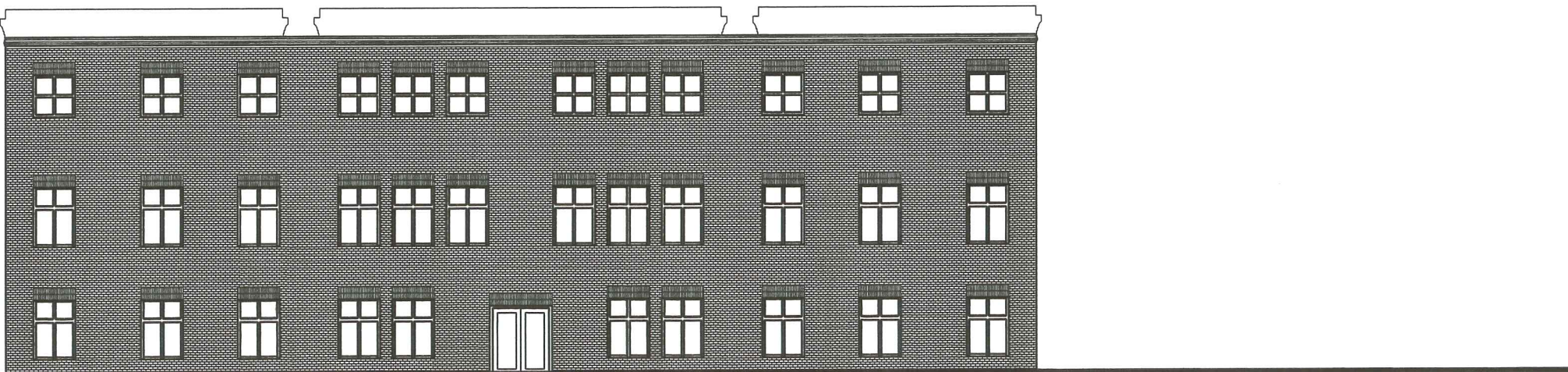


1 WEST ELEVATION (CALHOUN STATION PARKWAY)
SCALE 1/8"=1'-0"



1 NORTH ELEVATION
SCALE 1/8"=1'-0"

1 SOUTH ELEVATION
SCALE 1/8"=1'-0"



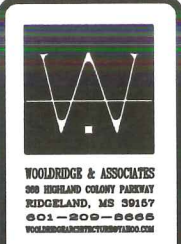
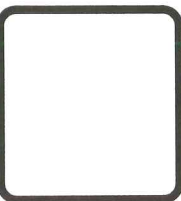
1 EAST ELEVATION
SCALE 1/8"=1'-0"

MAYOR&BOARD.dwg

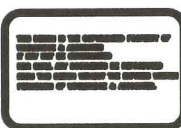
6/15/2001 9:21 AM

Woolridge & Associates

| REVISIONS | BY |
|-----------|----|
| | |
| | |
| | |
| | |
| | |
| | |
| | |



Germantown Office Complex
Calhoun Station Parkway
Gluckstadt, Mississippi



3/12/10

A3.0



1 WEST ELEVATION (CALHOUN STATION PARKWAY)
SCALE 1/8"=1'-0"



2 NORTH ELEVATION
SCALE 1/8"=1'-0"



3 SOUTH ELEVATION
SCALE 1/8"=1'-0"



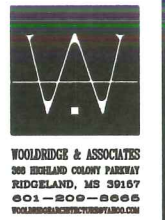
4 EAST ELEVATION
SCALE 1/8"=1'-0"

MAYOR&BOARD.dwg

6/15/2001 9:21 AM

Woodridge & Associates

| REVISIONS | BY |
|-----------|----|
| | |
| | |
| | |
| | |
| | |
| | |
| | |



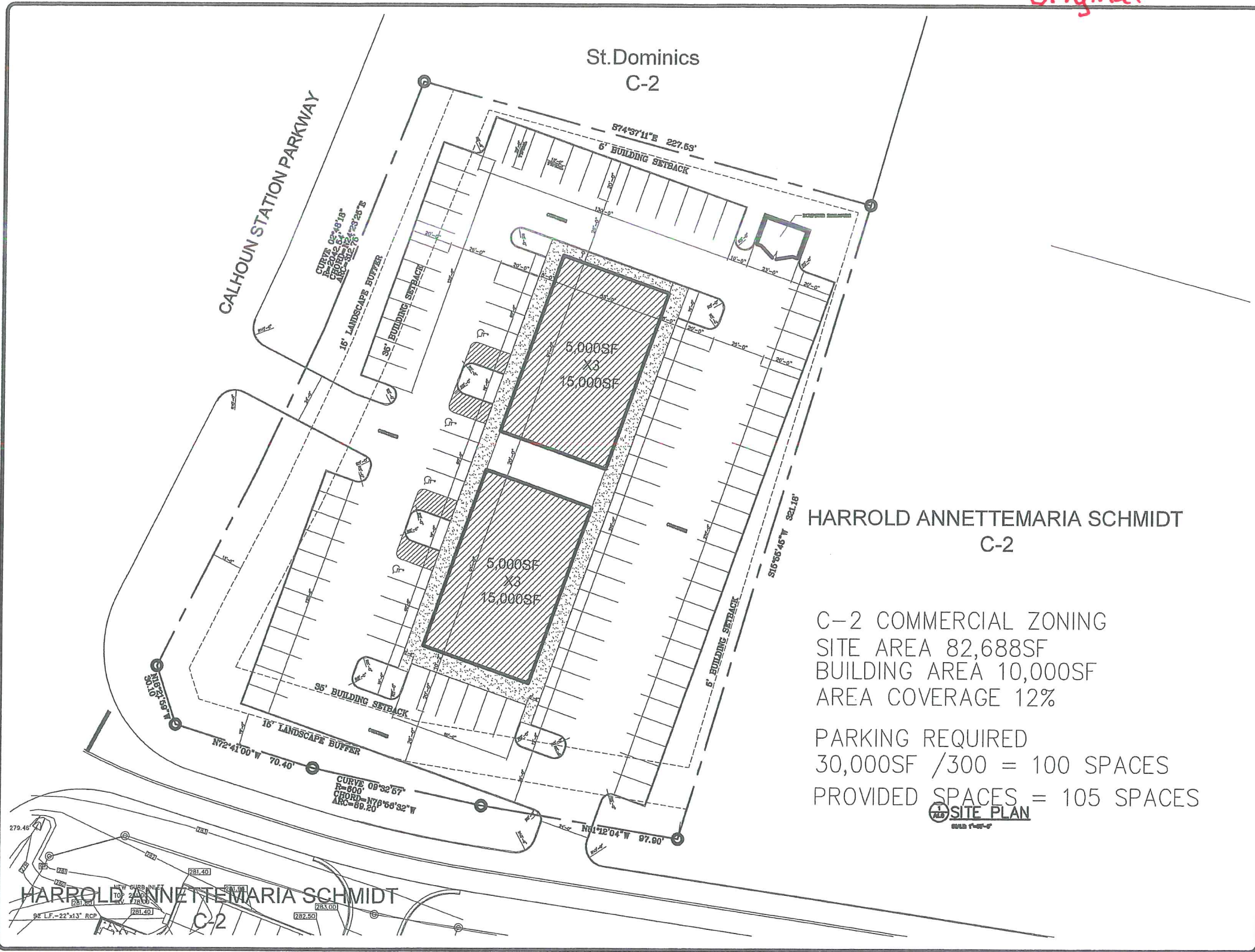
WOODRIDGE & ASSOCIATES
200 HERLAND COLONY PARKWAY
RIDGELAND, MS 39167
601-809-8888
WWW.WOODRIDGEARCHITECTURE.COM

Germantown Office Complex
Calhoun Station Parkway
Gluckstadt, Mississippi



| |
|---------|
| 3/12/19 |
| A3.1 |

Original



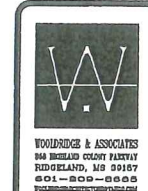
HARROLD ANNETTEMARIA SCHMIDT
C-2

C-2 COMMERCIAL ZONING
SITE AREA 82,688SF
BUILDING AREA 10,000SF
AREA COVERAGE 12%

PARKING REQUIRED
30,000SF / 300 = 100 SPACES
PROVIDED SPACES = 105 SPACES

SITE PLAN

| REVISIONS | BY |
|-----------|----|
| | |
| | |
| | |
| | |
| | |
| | |
| | |
| | |
| | |
| | |



WOODRIDGE & ASSOCIATES
100 WHEEL CREST PARKWAY
RIDGELAND, MS 39157
601-800-0000

Germanatown Office Complex
Calhoun Station Parkway
Gluckstadt, Mississippi



3/12/19
C1.0

MAYOR&BOARD.dwg

6/15/2001 9:21 AM

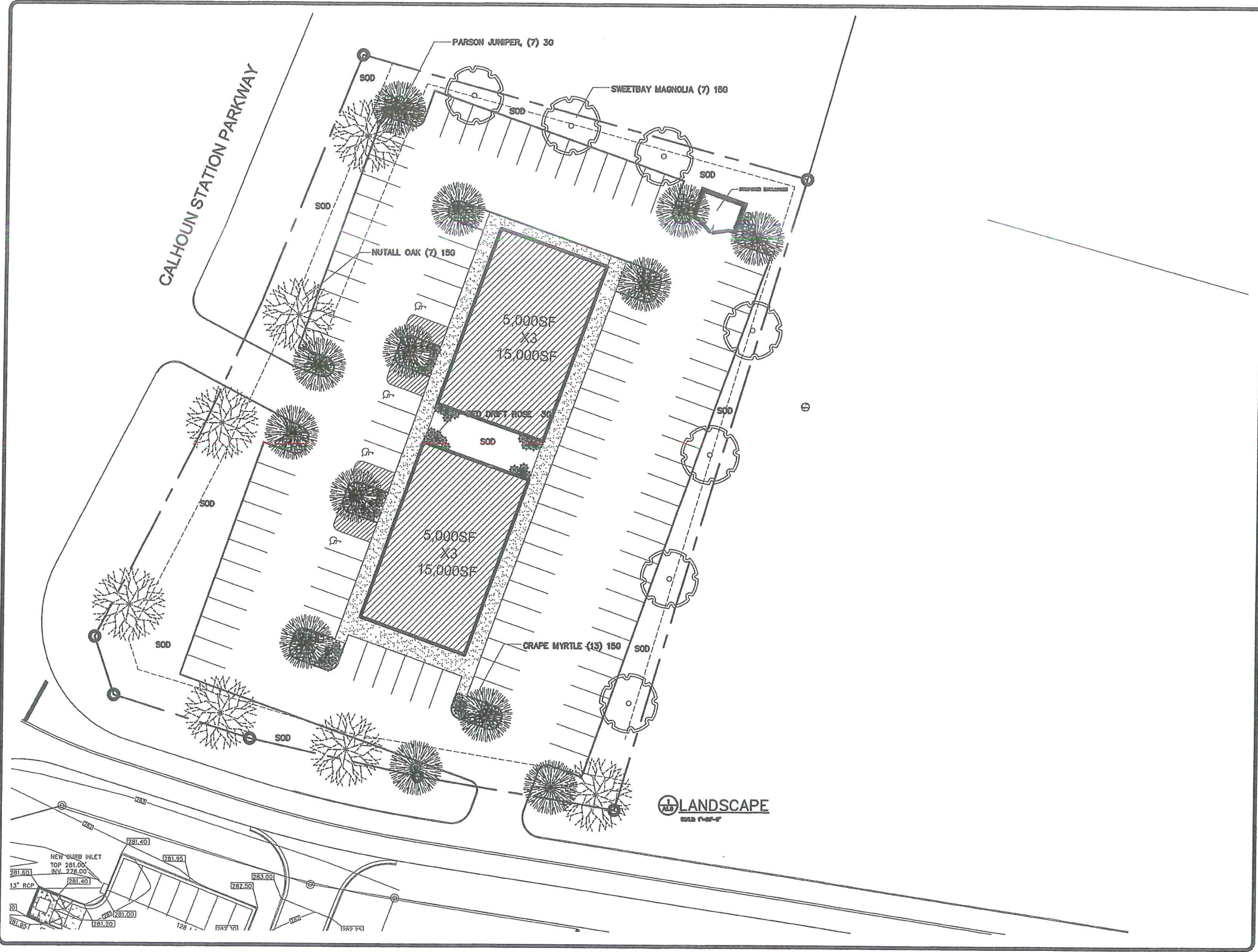
Woodridge & Associates

HARROLD ANNETTEMARIA SCHMIDT
C-2

MAYOR&BOARD.dwg

6/15/2001 9:21 AM

Woodruff & Associates



LANDSCAPE
SOLID FILL - G

| REVISIONS | BY |
|-----------|----|
| | |
| | |
| | |
| | |
| | |
| | |
| | |
| | |
| | |
| | |



WOODRUFF & ASSOCIATES
 200 BURNING GROUND PARKWAY
 RIDGELAND, MS 39157
 601-800-8888
www.woodruff.com

Germantown Office Complex
 Calhoun Station Parkway
 Cluckstadt, Mississippi

| |
|--|
| |
| |
| |
| |
| |

3/12/19
L1.0

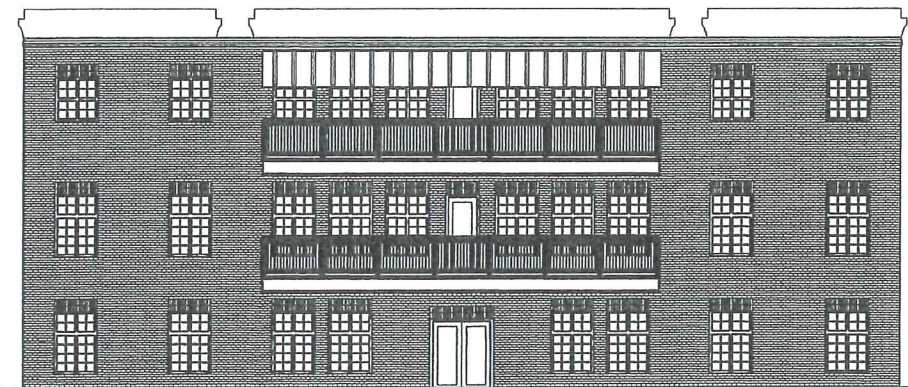


1 WEST ELEVATION (CALHOUN STATION PARKWAY)
SCALE 1/8"=1'-0"



1 NORTH ELEVATION
SCALE 1/8"=1'-0"

1 SOUTH ELEVATION
SCALE 1/8"=1'-0"



1 EAST ELEVATION
SCALE 1/8"=1'-0"

| REVISIONS | BY |
|-----------|----|
| | |
| | |
| | |
| | |
| | |
| | |
| | |
| | |
| | |
| | |



WOODRIDGE & ASSOCIATES
400 WOODLAND BLVD. SUITE 200
HIDOLAND, MS 39167
601-800-8000
WWW.WOODRIDGE-ASSOCIATES.COM

Germantown Office Complex
Calhoun Station Parkway
Gluckstadt, Mississippi

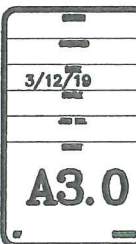
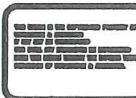
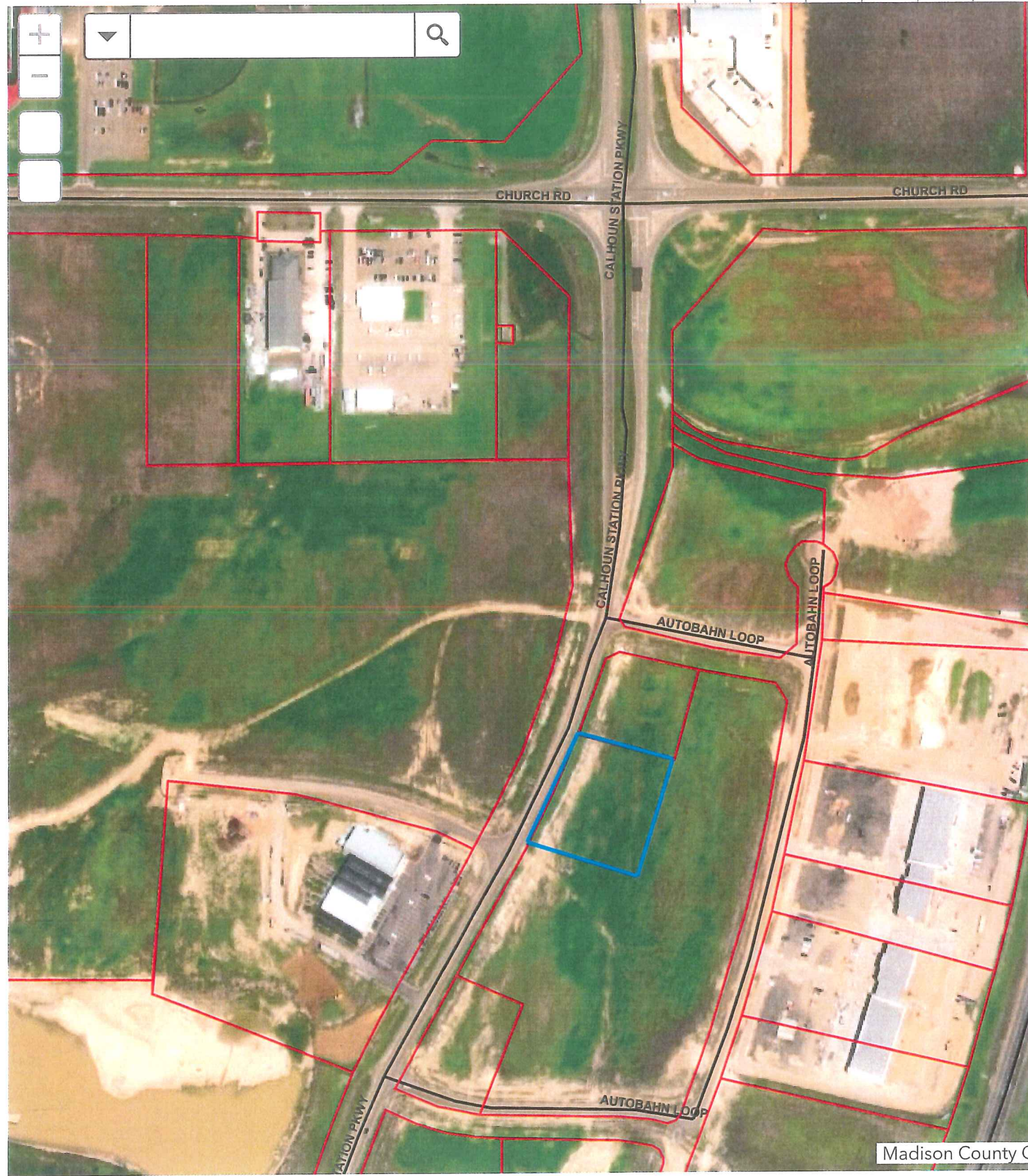


Exhibit B





Madison County C



-90.099 32.528 Degrees